

CompactDry × frozen processed seafood



Customers

Frozen processed seafood in Thailand

Nowadays, besides selling locally, Thai' s fishery products have been exported to many countries. As a sequence, all manufacturers do highly concern on consumers' safety and microbial testing standard which must be compliance to each of country standard

With variety types of Compact Dry, they can well support international standard regulation both for Finished Product and Environmental Swab application in the market.



<https://en.wikipedia.org/wiki/Surimi>

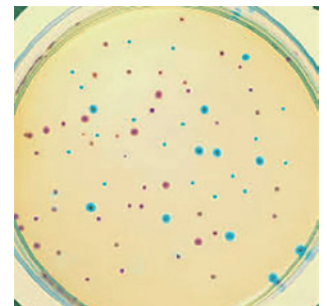
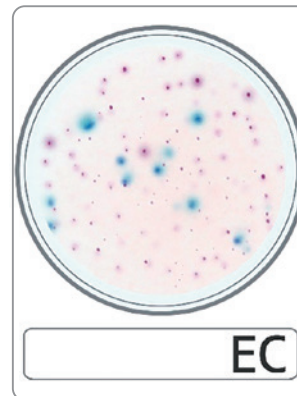
crab sticks-"Surimi"

"Surimi" refers to a paste made from fish. It can also refer to a number of East Asian foods that use that paste as their primary ingredient. It is available in many shapes, forms, and textures, and is often used to mimic the texture and color of the meat of lobster, crab, grilled Japanese eel and other shellfish.

CompactDry EC

CompactDry EC is a ready-to-use media which was developed based on the chromogenic culture media "XM-G Agar" by Shimadzu Diagnostics Corporation.

E.coli and Coliforms become colored on the plate by the chromogenic substrates "X-Gluc"&"Magenta-Gal" which are one of the components in CompactDry EC. CompactDry EC are more rapid and more clear enumeration than decomposing lactase, conventionally.



XM-G Agar

E.coli; blue
Coliforms; red

Applications

Many manufacturers have chosen Compact Dry to test seafood quality in many areas such as raw materials, environmental samples up to finished products to ensure that their products are safe and compliance to international standard.

Major samples are shrimp, fish, surimi and other surimi products and use with Compact Dry TC, EC, X-SA, YM, VP and BC.



<https://baike.baidu.com/item>

Shimadzu Diagnostics Corporation

Local
Distributor


OsKon Co.,Ltd.

Address: 955 Moo 5 Soi Sridan 21, T.Samrongnua,
A.Muang, Samutprakarn 10270

Call Us: (66-0) 948457-60

Email : main-gold@oskon.co.th